

# S9175

8 PIECES/PIEZAS

## MISSES' DRESSES

**Fabrics:** Sized for Stretch Knits only such as: Bamboo, Cotton Knits, Interlock, Jersey, Modal, Sweater Knits. See Pick-A-Knit® Rule. Suitable for Overlock/Serger. Extra fabric needed to match plaids, stripes or one-way design fabrics.

**Notions:** Thread. **B Dress:** One pkg. of ½" (1.3cm) wide single fold bias tape (for armhole). **C Dress:** 20" (51cm) long of swimsuit elastic (for neckline).

Sizes	6	8	10	12	14	16	18	20	22
European	32	34	36	38	40	42	44	46	48

### A Dress

60***	2½	2½	2½	2½	2½	2½	2½	2½	3½	Yd
-------	----	----	----	----	----	----	----	----	----	----

**Interfacing-** ¼ yds. of 20" to 25" lightweight fusible

### B Dress

60***	1½	1½	1¾	1¾	1¾	1¾	1¾	2¼	2¼	Yd
-------	----	----	----	----	----	----	----	----	----	----

### C Dress

60***	1½	1½	1¾	2¼	2¼	2¼	2¾	2¾	2¾	Yd
-------	----	----	----	----	----	----	----	----	----	----

## FINISHED GARMENT MEASUREMENTS

A, B, C Bust	31	32	33	34½	36½	38½	40½	42½	44½	In
--------------	----	----	----	-----	-----	-----	-----	-----	-----	----

A, B, C Hip	34½	35½	36½	38	40	42	44	46	48	"
-------------	-----	-----	-----	----	----	----	----	----	----	---

**Finished back length from base of neck:**

A, B, C Dress	47½	47¾	48	48¾	48½	48¾	49	49¼	49½	In
---------------	-----	-----	----	-----	-----	-----	----	-----	-----	----

A, B, C Dress Width	35	36	37	38½	40½	42½	44½	46½	48½	"
---------------------	----	----	----	-----	-----	-----	-----	-----	-----	---

## JEUNE FEMME: ROBES/ SEÑORITAS: VESTIDOS

Tailles/ Tallas	6	8	10	12	14	16	18	20	22
-----------------	---	---	----	----	----	----	----	----	----

Françaises	34	36	38	40	42	44	46	48	50
------------	----	----	----	----	----	----	----	----	----

Europeas	32	34	36	38	40	42	44	46	48
----------	----	----	----	----	----	----	----	----	----

### A Robe/ A Vestido

150cm**	2.30	2.30	2.30	2.40	2.40	2.40	2.40	2.40	2.90	m
---------	------	------	------	------	------	------	------	------	------	---

**Entoilage-** 1.10m de 51cm à 64cm, léger, thermocollant

**Entretela-** 1.10m de 51cm a 64cm, ligera, termoadhesiva

### B Robe/ B Vestido

150cm**	1.40	1.40	1.60	1.60	1.60	1.70	1.70	2.10	2.10	m
---------	------	------	------	------	------	------	------	------	------	---

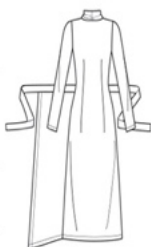
### C Robe/ C Vestido

150cm**	1.40	1.40	1.40	2.10	2.10	2.10	2.10	2.10	2.10	m
---------	------	------	------	------	------	------	------	------	------	---

\*without nap \*\*with nap \*\*\*with or without nap

\*sans sens \*\*avec sens \*\*\*avec ou sans sens

\*sin pelusa \*\*con pelusa \*\*\*sin o con pelusa



A



B



C

Instrucciones de costura en Español en el Interior del Patrón.