

11 PIECES/PIEZAS

Métrages et instructions de couture en Français à l'intérieur de l'enveloppe.

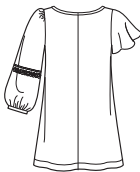


A



B

C



D

E

MISSES' SEVEN SIZES IN ONE

Sizes	10	12	14	16	18	20	22	
European Size	36	38	40	42	44	46	48	
Bust	32½"	34"	36"	38"	40"	42"	44"	In
Waist	25"	26½"	28"	30"	32"	34"	37"	"
Hips	34½"	36"	38"	40"	42"	44"	46"	"
Back-neck to waist	16"	16¼"	16½"	16¾"	17"	17¼"	17½"	"

A

45***	1%	1%	1%	1%	1%	1%	1%	Yd
60***	1%	1%	1%	1%	1%	1%	1%	"

B

45***	2%	2%	2%	2%	2½"	2½"	2½"	Yd
60***	1%	1%	1%	1%	1%	1%	1%	"

Contrast- ½ yd. of 45" or 60***

C

45***	2%	2%	2%	2%	2%	2%	2%	Yd
60***	1½"	1½"	1½"	1½"	1½"	1½"	1½"	"

D

45***	2%	2%	2%	2%	2%	3"	3"	Yd
60***	1%	1%	1%	1%	1%	1%	2½"	"

E

45***	2%	2%	2%	2%	2%	2%	2%	Yd
60***	1%	1%	1%	1%	1%	1%	1%	"

A,B,C,D,E Interfacing- ½ yd. of 20" to 25" lightweight fusible

GARMENT MEASUREMENTS

A,B,C,D,E Bust	36½"	38"	40"	42"	44"	46"	48"	In
----------------	------	-----	-----	-----	-----	-----	-----	----

SUGGESTED FABRICS

Cotton and Cotton Blends, Gingham, Calico, Seersucker, Charmeuse, Laundered Silks-Rayons, Gauze, Crinkled Gauze, Voile, Chiffon, Georgette, Soft Lightweight Linen and Linen Blends. Allow extra fabric for matching plaids or stripes.

REQUIREMENTS

A,C: One ¾" button. B: 1 yd. of ⅝" wide lace. C: Four appliques. D: Three ¾" buttons, ¾ yd. of ¾" wide lace, 1¼ yd. of ⅝" wide lace, 1 yd. of 1¼" wide lace

*without nap **with nap ***with or without nap

JEUNE FEMME: PATRON SEPT TAILLES

SEÑORITAS: PATRON SIETE TALLAS

Tailles / Tallas	10	12	14	16	18	20	22	
Taille Française	38	40	42	44	46	48	50	
Tallas europeas	36	38	40	42	44	46	48	
Poitrine / Busto	83	87	92	97	102	107	112	cm
Taille / Cintura	64	67	71	76	81	89	94	"
Hanches / Caderas	88	92	97	102	107	112	117	"

Dos (encolure à Taille) / Espalda (escote a cintura)

	40.5	41.5	42	42.5	43	44	44	cm
A 115cm**	1.50	1.60	1.60	1.60	1.60	1.60	1.70	m
150cm**	1.10	1.10	1.10	1.10	1.10	1.20	1.20	"

B

115cm**	2.20	2.20	2.20	2.20	2.20	2.30	2.30	m
150cm**	1.50	1.50	1.50	1.50	1.60	1.60	1.60	"

Partie Contrastante- 0.40m de 115cm ou 150cm**

Parte contrastante-0.40m de 115cm o 150cm**

C

115cm**	1.90	2.10	2.20	2.30	2.40	2.40	2.50	m
150cm**	1.30	1.40	1.40	1.40	1.40	1.50	1.60	"

D

115cm**	2.20	2.40	2.40	2.60	2.60	2.70	2.80	m
150cm**	1.60	1.70	1.70	1.70	1.70	1.80	2.10	"

E

115cm**	2.50	2.60	2.60	2.60	2.60	2.60	2.70	m
150cm**	1.60	1.70	1.70	1.70	1.70	1.70	1.80	"

A,B,C,D,E Entoilage- 0.40m de 51cm à 64cm léger thermocollant

A,B,C,D,E Entretela- 0.40m de 51cm à 64cm ligera adhesiva

TISSUS SUGGERES:

Coton et cotonnades, Vichy, Calico, Seersucker, Charmeuse, Soies/Rayonnes pré-lavées, Gaze, Gaze cloquée, Velo, Chiffon, Crêpe Georgette, Lin et mélanges de lin souples et légers. Prévoyez davantage de tissu pour raccorder les écossais ou rayures.

MERCERIE

A,C: Un bouton de 1cm. B: 0.90m de dentelle de 1.5cm de large. C: Quatre applications. D: Trois boutons de 1cm, 0.60m de dentelle de 2cm de large, 1.10m de dentelle de 1.5cm de large, 1.20m de dentelle de 3.2cm large

TELAS SUGERIDAS: Algodón y mezclas de algodones, Guigán, Calico, Seersucker, Charmeuse, Sedas/Rayones lavados, Gasa, Gasa arrugada, Velo, Chiffon, Crepé Georgette Lino y mezclas de lino ligeros y suaves. Se necesita tela adiciona para para casar cuadros o rayas.

MERCERIA: A,C: Un botón de 1cm. B: 0.90m de encaje de 1.5cm de ancho. C: Cuatro aplicaciones. D: Tres botones de 1cm, 0.60m de encaje de 2cm de ancho, 1.10m de 1.5cm de ancho, 1.20m de encaje de 3.2cm de ancho

*sans sens **avec sens ***avec ou sans sens

*sin pelusa **con pelusa ***con o sin pelusa

6027
SIZE A 10-22
FR. 38-50
EUR. 36-48