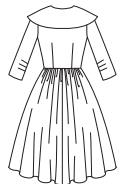


1459

17 PIECES/PIEZAS

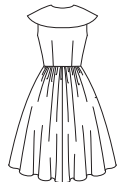
Medidas e Instrucciones de costura en Español en el Interior del Patrón.



A



B



C

MISSÉS/MISS PETITE DRESS AND CUMMERBUND

Fabrics: Lightweight to medium weight woven fabrics such as: Cotton and Linen Types, Cotton Lawn, Damask, Dupioni, Shantung, Gingham, Madras, Pique, Poplin, Sateen, Satin, Seersucker, Taffeta. **B Contrast Overskirt and Cummerbund** in Batiste, Dotted Swiss, Georgette, Organza, Voile. Extra fabric needed to match plaids, stripes or one-way design fabrics.

Notions: Thread, 14" zipper, two 1" buttons, one pkg. of hem tape. Look for Simplicity Trims.

BODY MEASUREMENTS (For Sizing Help Visit www.simplicity.com/sizehelp)

Bust	31½	32½	34	36	38	40	42	44	46	In
Waist	24	25	26½	28	30	32	34	37	39	"
Hip-9" below waist	33½	34½	36	38	40	42	44	46	48	"
Back-neck to waist	15½	16	16¼	16½	16¾	17	17¼	17½	17½	"
Pattern Size	8	10	12	14	16	18	20	22	24	
Sizes-European	34	36	38	40	42	44	46	48	50	

A Dress	45***	4½	4½	4½	4½	5%	5%	5%	5%	6	Yd
	60***	3½	3½	3¾	4%	4%	4%	4%	4%	4½	"

Interfacing- 1½ yd. of 20" to 25" lightweight fusible, such as Pellon®

B Dress	45***	4½	4½	4½	4½	5%	5%	5%	5%	5%	Yd
	60***	3¾	3%	3¾	4%	4%	4%	4%	4%	4½	"

Contrast Overskirt

45***	3%	3%	3%	3%	3%	3%	3%	3%	3%	3%	Yd
60***	2	2	2¼	3¼	3%	3%	3%	3%	3%	3%	"

Interfacing- 1½ yd. of 20" to 25" lightweight fusible, such as Pellon®

C Dress	45***	4½	4½	4½	4½	5%	5%	5%	5%	5%	Yd
	60***	3¾	3%	3¾	4%	4%	4%	4%	4%	4½	"

Interfacing- 1¾ yd. of 20" to 25" lightweight fusible, such as Pellon®

A,B,C Skirt Lining (opt.)

45**	2%	2%	2%	2%	2¼	2¼	2¼	2%	2%	2%	Yd
Net Underskirt (opt.)	54"	3½	3½	3½	3½	3%	3%	3%	3%	3%	Yd

Ribbon Belt- 3¾ yd. of 1½" wide ribbon

Notions: Two large hooks and eyes

Cummerbund- 1¼ yd. of 45" or 60"***

Notions: Featherweight Boning- ¾ yd. of ¼" wide, four large hooks and eyes

FINISHED GARMENT MEASUREMENTS (Includes Design and Wearing EASE)

A,B,C Bust	34½	35½	37	39	41	43	45	47	49	In
Finished back length from base of neck:										
A,B,C	41¾	42	42¼	42½	42¾	43	43¼	43½	43¾	In

*without nap **with nap ***with or without nap

JEUNE FEMME / PETITE JEUNE FEMME: ROBE ET GRANDE CEINTURE

Tissus: Tissés Légers à Moyens tels que: Coton et Lin, Linon, Soie Damassée, Soie Dupionée, Shantung, Vichy, Madras, Piqué, Popeline fine, Satinette, Satin, Seersucker, Taffetas. **B Dessus de Jupe et Grande Ceinture contrastants** en Batiste, Plumetis, Crêpe Georgette, Organza, Voile. Prévoyez davantage de tissu pour raccorder les écossais, les rayures ou les motifs unidirectionnels.

Merceria: Fil, une glissière de 35cm, deux boutons de 2.5cm, un paquet d'extra-fort pour ourlet. Demandez les garnitures de Simplicity Trims.

MESURES NORMALISÉES

Poitrine	80	83	87	92	97	102	107	112	117	cm
Taille	61	64	67	71	76	81	87	94	99	"
Hanches (23cm au-dessous de la taille)	85	88	92	97	102	107	112	117	122	cm
Dos (encolure à taille)	40	40.5	41.5	42	42.5	43	44	44	44.5	cm
Tailles	8	10	12	14	16	18	20	22	24	
Tailles-Françaises	36	38	40	42	44	46	48	50	52	

A Robe	115cm**	4.10	4.10	4.10	4.10	4.90	5.00	5.10	5.30	5.50	m
	150cm**	3.20	3.20	3.40	4.00	4.10	4.10	4.10	4.10	4.20	"

Entoilage- 1.50m de 51cm à 64cm, léger thermocollant tels que Pellon®

B Robe	115cm**	4.10	4.10	4.10	4.10	4.90	5.00	5.00	5.10	5.10	m
	150cm**	3.00	3.00	3.40	4.00	4.10	4.10	4.10	4.10	4.20	"

Dessus-de-Jupe Contrastant

115cm**	3.10	3.10	3.10	3.10	3.10	3.10	3.10	3.10	3.10	3.10	m
150cm**	1.90	2.10	2.50	3.00	3.00	3.00	3.10	3.10	3.10	3.10	"

Entoilage- 1.50m de 51cm à 64cm, léger thermocollant tels que Pellon®

C Robe	115cm**	4.10	4.10	4.10	4.10	4.90	5.00	5.00	5.00	5.10	m
	150cm**	3.00	3.00	3.40	4.00	4.10	4.10	4.10	4.10	4.20	"

Entoilage- 1.60m de 51cm à 64cm, léger thermocollant tels que Pellon®

A,B,C Doublure de la Jupe (facult.)

115cm*	2.30	2.40	2.40	2.40	2.50	2.50	2.60	2.60	2.60	2.60	m
Dessus-de-Jupe en Tulle (facult.)	140cm	3.20	3.20	3.20	3.20	3.30	3.30	3.30	3.30	3.30	m

Ceinture en Ruban- 3.00m de ruban de 3.8cm de large.

Merceria: Deux grosses agrafes

Grande Ceinture - 1.10m de 115cm ou 150cm**

Merceria: Baleine très fine- 0.40m de 6mm de large, quatre grosses agrafes

MESURES DES VÊTEMENTS FINIS

A,B,C Poitrine	87.5	90	94	99	104	110	115	120	125	cm
Longueur finie du dos depuis la base du cou:										
A,B,C	106	107	107	108	109	110	110	111	111	cm

*sans sens **avec sens ***avec ou sans sens