

S9052

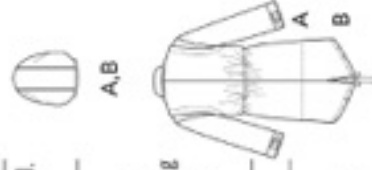
16 PIECES/PIEZAS

MISSES', MEN'S AND TEENS' JACKET IN TWO LENGTHS WITH DETACHABLE HOOD

Fabrics: Chino, Cottons, Denim, Poplin, Rip Stop Nylon, Sweatshirt Fleece, Twill. Extra fabric needed to match plaids, stripes or one-way design fabrics.

Notions: Thread. **A:** One 27" separating zipper, fifteen ¾" buttons, 3½ yds. of ¼" wide grosgrain ribbon (for casing and seams), 2¼ yds. of ¼" wide cording.

A,B: One 12" separating zipper (for hood), two cord stops. **B:** One 36" separating zipper, sixteen ¾" buttons, 4 yds. of ¼" wide grosgrain ribbon (for casing and seams), 2¼ yds. of ¼" wide cording.



Sizes XS S M L XL

A Jacket

45***	3½	3¾	3¾	4¼	4¾	Yd
60***	2¾	3	3	3¼	3¾	*

Interfacing- 1½ yds. of 20" to 25" lightweight fusible, such as Pellon®

B Jacket

45***	4¾	4¾	4¾	4¾	4¾	Yd
60***	3¾	3¾	3¾	3¾	3¾	*

Interfacing- 1½ yds. of 20" to 25" lightweight fusible, such as Pellon®

FINISHED GARMENT MEASUREMENTS

A,B Bust/ Chest 44 47 50 54 58 In

Finished back length from base of neck:

A Length	30	30½	31	31½	32	In
B Length	39	39½	40	40½	41	*

JEUNES FEMMES, HOMMES ET ADOLESCENTS: VESTE EN DEUX LONGUEURS AVEC CAPUCHE AMOVIBLE

Tailles TP P M G TG

A Veste

115cm**	3.30	3.40	3.50	3.90	3.90	m
150cm**	2.60	2.70	2.80	3.00	3.10	*

Entoilage- 1,30m de 51cm à 64cm, léger, thermocoillant tel que Pellon®

B Veste

115cm**	3.80	3.80	4.00	4.20	4.40	m
150cm**	2.90	2.90	3.00	3.40	3.50	*

Entoilage- 1,40m de 51cm à 64cm, léger, thermocoillant tel que Pellon®

*without cap **with cap ***with or without cap *sans capes **avec capes ***avec ou sans capes

Medidas e Instrucciones de costura en Español en el Interior del Patrón.