

S9161

14 PIECES

CHILDREN'S COSTUME

Fabrics: A,B,C Lining: Cotton/Cotton Blends, Lining Fabric. **A,C Costume:** Jacquard, Satin, Sateen. **C Sleeves:** Sheer, Lace. **B Skirt:** Twill, Suiting Fabric. **B Apron and Skirt** also in Linen Types. **B Bodice, Sleeves, Pockets:** Cotton/Cotton Blends. Extra fabric needed to match plaids, stripes or one-way design fabrics.

Notions: Thread, $\frac{7}{8}$ yd. of 1" wide elastic. **A:** 2½ yds. of 1" wide lace, 4 yds. of $\frac{3}{8}$ " wide flexible trim, $\frac{3}{4}$ yd. of $\frac{1}{2}$ " wide hook and loop tape. **A,B:** 1¼ yds. of $\frac{3}{8}$ " to $\frac{5}{8}$ " wide ribbon. **B:** One pkg. of $\frac{1}{2}$ " wide single fold bias tape, $\frac{5}{8}$ yd. of $\frac{1}{4}$ " wide elastic. **B,C:** $\frac{1}{2}$ yd. of $\frac{1}{2}$ " wide hook and loop tape. **C:** 1¾ yds. of $\frac{1}{2}$ " wide flexible trim.

Sizes	3	4	5	6	7	8
-------	---	---	---	---	---	---

A,B,C Lining- $\frac{5}{8}$ yd. of 45"

A Costume: Bodice Back, Collar, Side Front for Bodice Sleeves and Skirt

45"	1½	1¾	1¾	1½	2	2	Yd
-----	----	----	----	----	---	---	----

Front for Bodice and Skirt

45"	$\frac{7}{8}$	$\frac{7}{8}$	1	1	1	1½	Yd
-----	---------------	---------------	---	---	---	----	----

Interfacing- $\frac{3}{4}$ yd. of 20" to 25" heavy weight craft fusible

B Costume: Bodice Side Front and Back- $\frac{5}{8}$ yd. of 45"

Bodice Front and Sleeves- $\frac{3}{4}$ yd. of 45" or 60"

Skirt

45"	1½	1½	1¾	1½	1½	1½	Yd
-----	----	----	----	----	----	----	----

Apron- $\frac{3}{4}$ yd. of 45"; **Pockets-** 6" x 10½" fabric remnant

B,C Interfacing- $\frac{1}{2}$ yd. of 20" to 25" heavy weight craft fusible

C Costume: Bodice- $\frac{5}{8}$ yd. of 45"; **Sleeves-** $\frac{5}{8}$ yd. of 45"

Skirt Back, Skirt Side Front and Peplum

45"	1½	1½	1¾	1½	1½	1¾	Yd
-----	----	----	----	----	----	----	----

Skirt Front

45"	$\frac{7}{8}$	$\frac{7}{8}$	1	1	1	1½	Yd
-----	---------------	---------------	---	---	---	----	----

FINISHED GARMENT MEASUREMENTS

Chest	23½	24½	25½	26½	27½	28½	In
-------	-----	-----	-----	-----	-----	-----	----

Finished back length from base of neck:

Skirt Length	23	24	26	28	30	32	In
--------------	----	----	----	----	----	----	----

Skirt Width	45½	46½	47½	48½	49½	50½	"
-------------	-----	-----	-----	-----	-----	-----	---

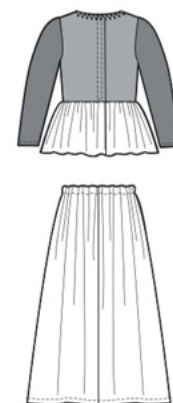
*without nap **with nap ***with or without nap



A



B



C