

S9211

10 PIECES/PIEZAS

CHILD'S AND ADULT'S TOP, SHIRT AND PANTS

Fabrics: Broadcloth, Cotton Blends, Cotton Knits, Flannel, Jerseys. Extra fabric needed to match plaids, stripes or one-way design fabrics.

Notions: Thread. **A,B:** Two 5/8" (1.5cm) buttons. **C:** 1" (2.5cm) wide elastic: 1/8 yd. (0.90m) for Children, 1 1/2 yds. (1.5m) for Adults.

Sizes	CHILDREN (BB)				ADULTS (AA)				Yd
	S (7-8)	M (10-12)	L (14-16)	XL (18-20)	S 34-36	M 38-40	L 42-44	XL 46-48	

A Top									
45***	1 5/8	2	2 1/8	2 1/4	2 5/8	2 3/4	2 7/8	3 3/8	Yd
60***	1 1/8	1 1/2	1 5/8	1 3/4	2 1/4	2 1/4	2 1/4	2 5/8	"

A,B Interfacing: 5/8 yd. of 20" to 25" lightweight fusible

B Shirt									
45***	2 1/8	2 1/4	2 1/2	2 3/4	3 3/8	3 1/2	3 3/4	4 1/8	Yd
60***	1 5/8	1 7/8	2	2 1/8	2 7/8	3	3	3	"

C Pants									
45***	1 7/8	2 1/8	2 1/2	2 5/8	2 3/4	2 3/4	2 3/4	2 3/4	Yd
60***	1 1/8	1 1/4	1 5/8	1 3/4	2 1/8	2 1/8	2 1/8	2 3/4	"

FINISHED GARMENT MEASUREMENTS

A,B Chest/Bust 35 37 1/2 41 1/2 45 1/2 44 48 52 56 In

C Hip 33 1/2 36 40 44 41 45 49 53 "

Finished back length from base of neck:

A Top 18 1/2 21 1/2 24 1/2 27 1/2 29 29 1/2 30 30 1/2 In

B Shirt 28 1/2 32 1/2 36 1/2 40 1/2 43 1/2 44 44 1/2 45 "

A Width 40 42 44 46 50 1/2 54 1/2 58 1/2 62 1/2 "

B Width 42 1/2 44 1/2 46 1/2 48 1/2 55 59 63 67 "

C Side Length 33 36 39 42 43 1/2 44 44 1/2 45 "

C Leg Width 16 16 1/2 17 17 1/2 20 21 22 23 "

ENFANTS ET ADULTES: HAUT, CHEMISE ET PANTALON

NIÑOS Y ADULTOS: TOP, CAMISA Y PANTALÓN

Tailles/ Tallas	ENFANTS / NIÑOS (BB)				ADULTES / ADULTOS (AA)			
	P (7-8)	M (10-12)	G (14-16)	TG/XG (18-20)	P 34-36	M 38-40	G 42-44	TG/XG 46-48

A Haut/ A Top

115cm** 1.50 1.80 1.90 2.10 2.40 2.50 2.60 3.00 m

150cm** 1.30 1.40 1.50 1.60 2.00 2.10 2.10 2.10 "

Entoilage Thermocollant A,B- 0.50m de 51cm à 64cm, léger, thermocollant

Entretela Termoadhesiva A,B- 0.50m de 51cm a 64cm, ligera, termoadhesiva

B Chemise/ B Camisa

115cm** 1.90 2.10 2.30 2.50 3.10 3.20 3.40 3.80 m

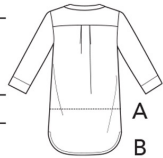
150cm** 1.50 1.70 1.80 2.00 2.70 2.70 2.70 2.80 "

C Pantalon/ C Pantalón

115cm** 1.70 1.90 2.30 2.40 2.50 2.50 2.50 2.60 m

150cm** 1.10 1.10 1.20 1.30 2.10 2.20 2.20 2.60 "

*without nap **with nap ***with or without nap *sans sens **avec sens ***avec ou sans sens
*sin pelusa **con pelusa ***sin o con pelusa



Instrucciones de costura en Español en el Interior del Patrón.